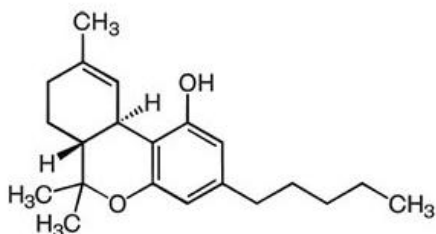


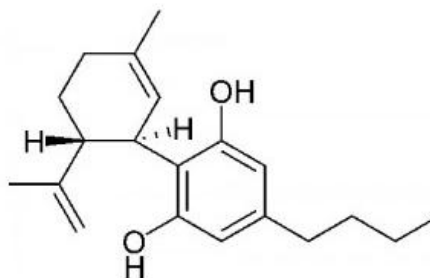
Candy Cane From Crop King Seeds

(samples taken from 3grams of dried bud plant material)

Sample	compound	% of total material	mg per g	totals in %	totals in mg per g
Candy Cane	CBG	0.107	1.07	0.107	1.07
	CBD	0.000	0.00	0.014	0.14
	CBD-A	0.014	0.14		
	CBN	0.396	3.96	0.396	3.96
	THC	0.401	4.01	17.805	178.05
	CBC	0.102	1.02	0.102	1.02
	THC-A	17.403	174.03		



THC (Tetrahydrocannabinol)



CBD (Cannabidiol)

Tested by: PHILIP TAYLOR

Date: December 5, 2013