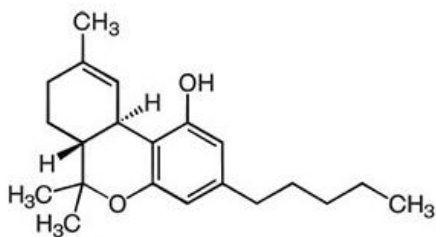


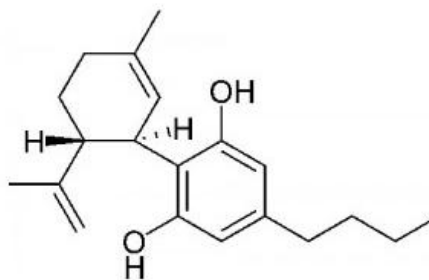
Early Miss From Crop King Seeds

(samples taken from 3grams of dried bud plant material)

Sample	compound	% of total material	mg per g	totals in %	totals in mg per g
Early Miss	CBG	0.068	0.68	0.068	0.68
	CBD	0.043	0.43	0.068	0.68
	CBD-A	0.025	0.25		
	CBN	0.045	0.45	0.045	0.45
	THC	1.060	10.60	20.062	200.62
	CBC	0.049	0.49	0.049	0.49
	THC-A	19.002	190.02		



THC (Tetrahydrocannabinol)



CBD (Cannabidiol)

Tested by: PHILIP TAYLOR

Date: December 5, 2013