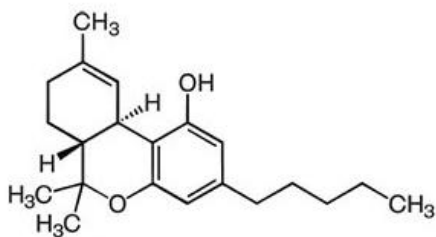


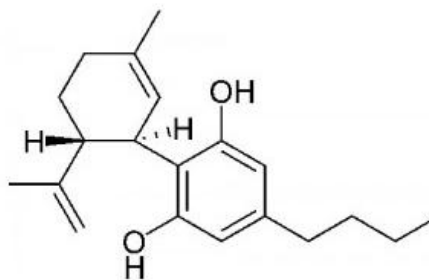
Hash Plant From Crop King Seeds

(samples taken from 3grams of dried bud plant material)

Sample	compound	% of total material	mg per g	totals in %	totals in mg per g
Hash Plant	CBG	0.064	0.64	0.064	0.64
	CBD	0.350	3.50	0.35	3.50
	CBD-A	0.000	0.00		
	CBN	0.331	3.31	0.331	3.31
	THC	1.309	13.09	12.104	121.04
	CBC	0.484	4.84	0.484	4.84
	THC-A	10.795	107.95		



THC (Tetrahydrocannabinol)



CBD (Cannabidiol)

Tested by: PHILIP TAYLOR

Date: December 5, 2013