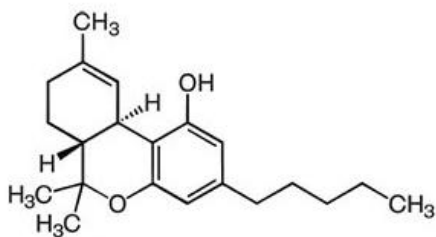


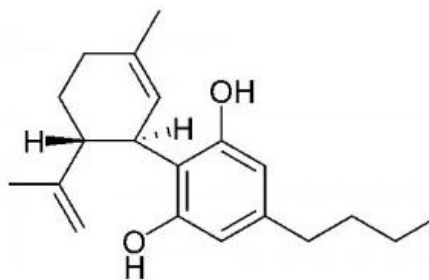
Blueberry From Crop King Seeds

(samples taken from 3grams of dried bud plant material)

Sample	compound	% of total material	mg per g	totals in %	totals in mg per g
Blueberry	CBG	0.064	0.64	0.064	0.64
	CBD	0.120	1.20	0.137	1.37
	CBD-A	0.017	0.17		
	CBN	0.118	1.18	0.118	1.18
	THC	3.733	37.33	20.334	203.34
	CBC	0.051	0.51	0.051	0.51
	THC-A	16.600	166.00		



THC (Tetrahydrocannabinol)



CBD (Cannabidiol)

Tested by: PHILIP TAYLOR

Date: December 5, 2013